

FOR TAX PURPOSES ONLY
NOT TO BE USED FOR CONVEYANCE

All tax maps are referenced to the New York State Plane Central Coordinate System using the 1983 North American Datum. Property lines have been registered to 1991-92 Tompkins County Digital Planimetric Base Map, and, as a result, dimensions and acreages may vary from legal descriptions. For complete legal descriptions or conveyances, please refer to the appropriate deeds and surveys.

NOTICE OF DISCLAIMER
This map represents a compilation of graphical and textual information from deeds and surveys, a digital planimetric base map, and digital conversion of hand-drawn maps. Errors and omissions can occur from each of these sources, each source represents a large number of records and originates of information. As a practical matter, the County does not warrant the accuracy or completeness of the information provided. The end user of these maps agrees to accept the data "as is" with the full knowledge that errors and omissions may exist, and to hold harmless the County for any damages that may result from an inappropriate use of these maps.

SPECIAL DISTRICT INFORMATION

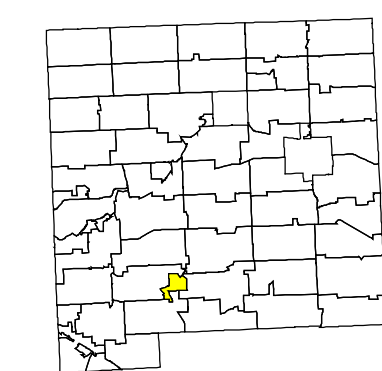
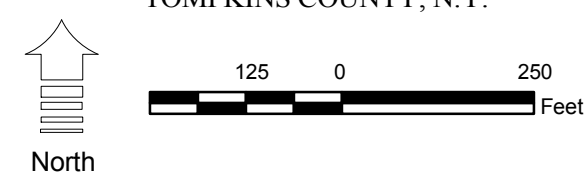
Ithaca City School District
Dryden Fire Protection District

- Building Footprint (1991-2009)
- Curb/Pavement Line
- Railroad
- Hydrography
- Special District
- Municipality
- Military Tract/Watkins & Flint Lot Number

- LEGEND**
- Parcel Connector
 - Property Line
 - Former Property Line
 - Current Year Changes
 - Block Limit
 - External Tax Map
 - Block Number

- 43.1** Parcel Lot Number
- 3 12** Previous Lot Number
- 4 3** Subdivision Lot Number
- 5.6 Ac** Deed/Survey Acreage
- 2.11 Ac C** Computed Acreage
- 18.50 Ac G** Grouped (Total) Acreage
- 100s** Scaled (Calculated) Acreage
- 100d** Deed Dimension

TOWN OF DRYDEN
TOMPKINS COUNTY, N.Y.



MAP: 65
SCALE: 1" = 250'
(When plotted on Arch D Media)
11 x 17" (47%), scale is 1" = 425'
MAP REVISED: 1-JULY-2009
MAP PRINTED: 1-JULY-2009