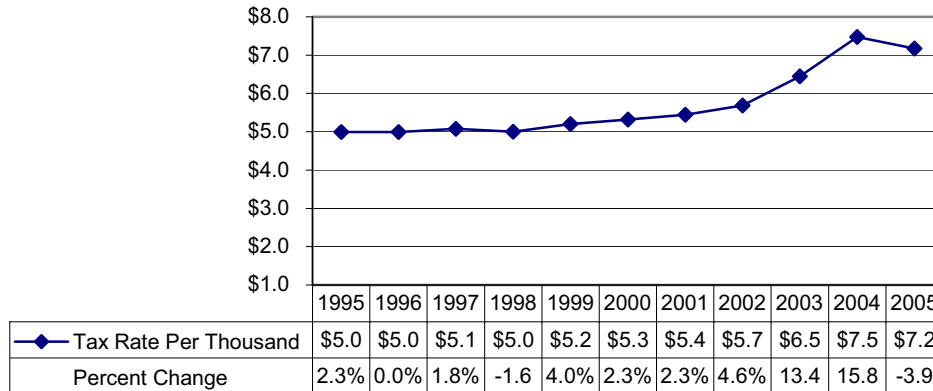


# 10 – Year History

**Real Property Tax Rate, 10 - Year History**  
(Gross tax rate per \$1,000 of assessed property value)



**ASSESSED VALUE, TAX LEVY, AND PROPERTY TAX 10 YEAR HISTORY**

	Total Assessed Value	County Tax Levy	% Change	County Property Tax on *\$120,000 Home	Increase/Decrease
1995	3,498,468,302	17,422,806		\$598	
1996	3,503,501,212	17,482,118	0.34%	\$599	\$1
1997	3,530,312,370	17,919,915	2.50%	\$609	\$10
1998	3,529,220,885	17,649,481	-1.51%	\$600	-\$9
1999	3,538,873,273	18,388,879	4.19%	\$624	\$23
2000	3,558,007,723	18,914,064	2.86%	\$638	\$14
2001	3,679,415,322	20,033,105	5.92%	\$653	\$15
2002	3,747,276,753	21,319,784	6.42%	\$683	\$29
2003	3,891,104,591	25,113,783	17.80%	\$774	\$92
2004	4,159,058,557	31,057,403	23.67%	\$896	\$122
2005	4,612,905,463	33,103,560	6.59%	\$861	-\$35

Definitions:

**Total assessed value** is the sum of the assessments of all taxable properties in the County.

**Tax levy** is the total amount of property tax needed to balance the County budget after all other revenues are calculated.

\*The **median assessment** for residential property in Tompkins County in 2004 was \$120,000.

**Real Property Tax Levy, 10-year History**  
(total amount of property tax; dollar amounts in millions)

